

Leica BLK360

How to update the firmware



This document describes how to update the firmware of the Leica BLK360 imaging laser scanner.

Prerequisite

- BLK360 imaging scanner with fully charged battery of type GEB212
- Computer with WLAN connection
- Latest BLK360 firmware file of type .swu

SWU file

Download the latest .swu file from one of the following website pages:

- myWorld @ Leica Geosystems Customer Portal (<https://myworld.leica-geosystems.com>)
- Leica BLK360 home page (<https://lasers.leica-geosystems.com/blk360-firmware>)

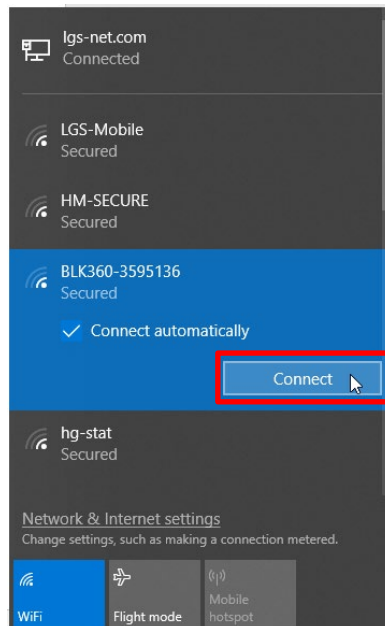
Save it to the local hard disk of your computer. The .swu file contains the binary image to be installed on the BLK360 and its size is approximately 107 MB.

Start up the BLK360

- Insert a fully charged battery of type GEB212 into the BLK360
- Press the power button to turn on the BLK360
- Wait for the BLK360 to be ready for operation (LED turns to continuous green)

WLAN connection between the BLK360 and a computer

- On your computer create a WLAN connection to the BLK360

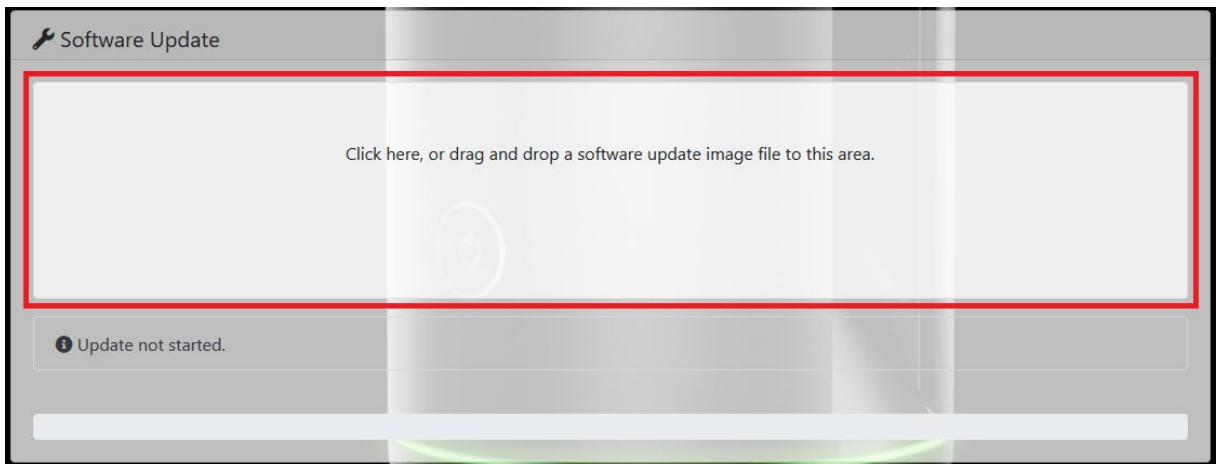


- On your computer open any preferred internet browser (e.g. Internet Explorer, Chrome, Firefox, ...)
- Enter the following URL in the address bar to open the "Firmware Update" page:
http://192.168.10.90:8080

Select SWU file

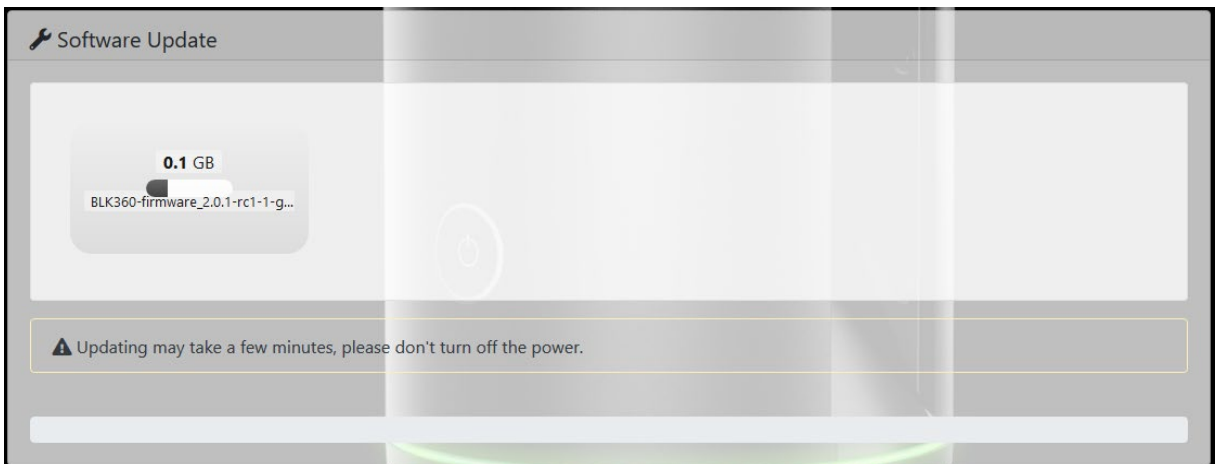
- On the "Firmware Update" page:
 - Browse to the previously saved .swu file on the local hard disk by clicking into the software update field or
 - Drag and drop the .swu file into the software update field

The update of the BLK360 will start immediately.

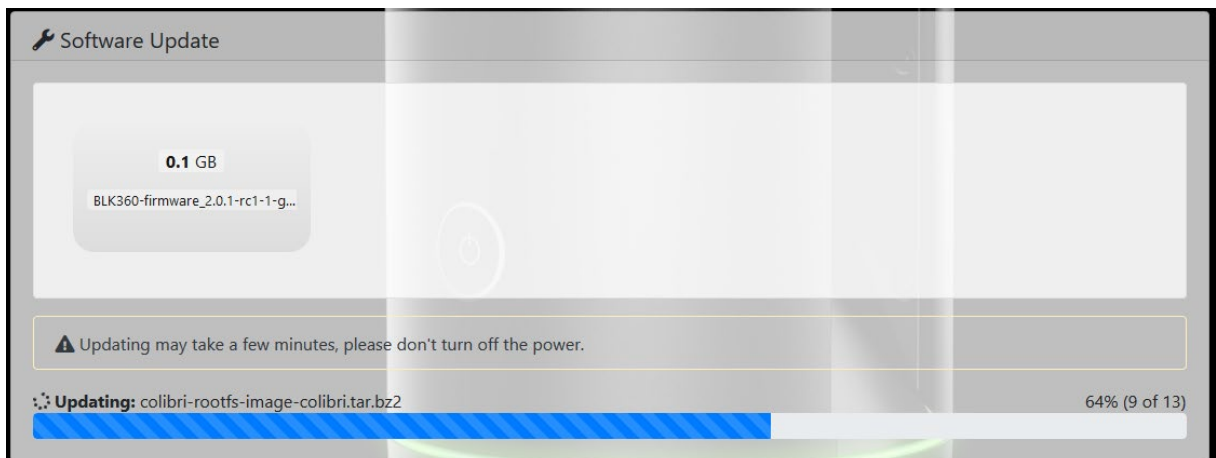


Firmware update process

- First the .swu file will be uploaded to the BLK360.

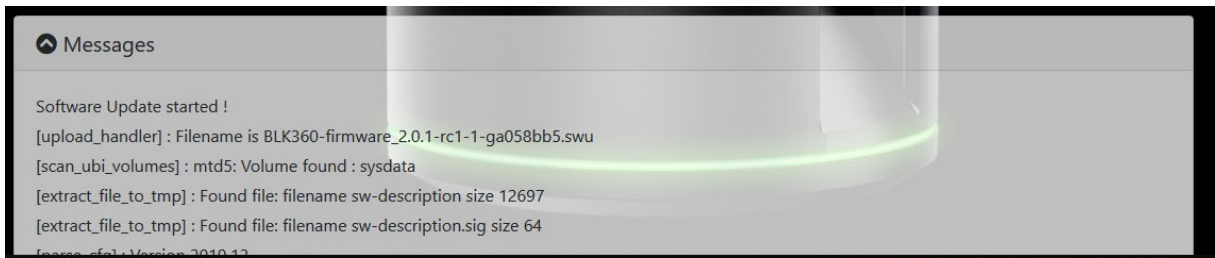


- After a successful upload the update is automatically started.

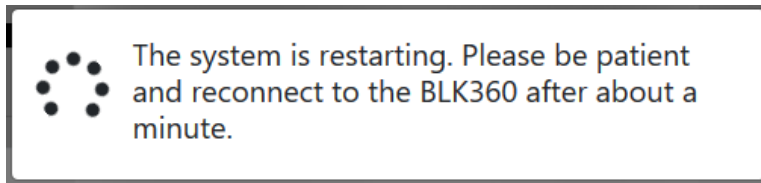


While the update is running the BLK360 starts blinking yellow.

- Open the Messages dropdown menu to display more details of the current upload process.

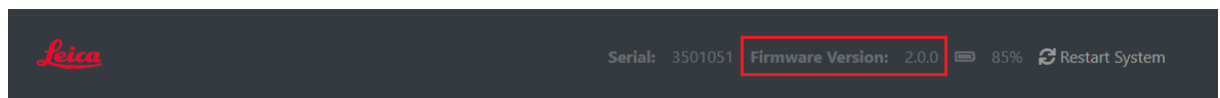


- After successful firmware upload the BLK360 will be restarted automatically
- The browser will try to reconnect, but the webpage can be closed



- The BLK360 is ready for operation (LED turns to continuous green) again
- To reconnect the BLK360 again, the WLAN connection needs to be re-established
 - See chapter **WLAN connection between the BLK360 and a computer**

By reconnecting to the BLK360 webpage the successful firmware upgrade can be confirmed by verifying the version number.



The BLK360 imaging laser scanner has the latest firmware installed and is ready for operation.